

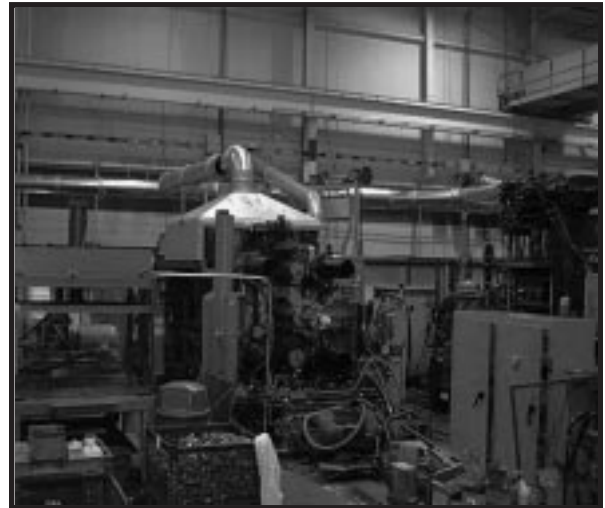


AIR POLLUTION CONTROL CASE STUDY

Application: Aluminum Die Cast Exhaust

Project No's. J279 & J373: MTD Products, Inc.

Location: Leitchfield, Kentucky



Problem: This MTD location die casts transmission housings used by GE in their line of washing machines. All die casting produces a mixture of smoke, oil mist, graphite and sprue material. Environmental regulations prevented exhausting into the outside atmosphere unless pollution control measures were in place.

Solution: Two Power Cleans, Model SA-0606-W were installed to control the exhaust emissions. This multi-stage system consists of a gravity drop out section, followed by a self-renewing prefilter, followed by an electrostatic precipitator with built-in automatic cleaning. Each Power Clean is connected to local exhaust hoods at 4 die casters and exhausts 10,000 cfm.